



kaleidescape

# KEAOS 4.3

## Release Notes

January, 2012

# What's New in KEAOS 4.3?

The following features were introduced in KEAOS 4.3:

- ▶ CinemaScope
- ▶ Support for the Kaleidescape App for iPad
- ▶ Better user interface support for large movie collections
- ▶ Improved temperature monitoring

## CinemaScope

CinemaScope video processing perfects the home theater experience by eliminating the need for anamorphic lens movement or changing projector modes when viewing content with different aspect ratios. CinemaScope makes transitions between different types of content, as well as between content and the onscreen display (OSD), fast and seamless.

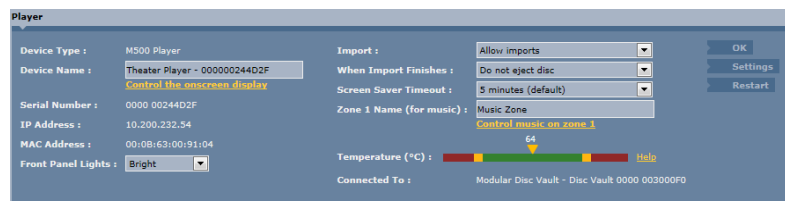
Seamless transition is especially important with Kaleidescape Scenes, which enable you to enjoy memorable moments from your favorite movies instantly. In combination with CinemaScope, you can now jump from one scene to another without manually adjusting your projector, or the distraction of a motorized lens sled.

CinemaScope also repositions subtitles in the letterboxed region of 2.35 movies within the visible frame.

CinemaScope also takes full advantage of 2.35 and 2.40 screens when browsing your collection using the Kaleidescape user interface. More movie covers are visible than ever before, and the Movie List view shows the title, actors, director, genre, year of release, movie rating, and runtime, all without scrolling.

To enable CinemaScope use the following procedure:

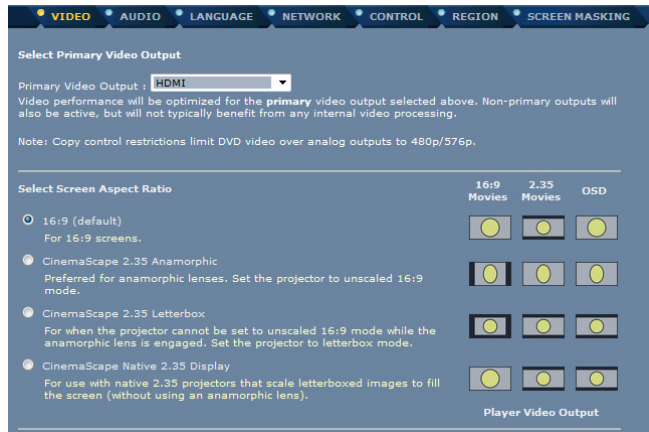
1. Access the installer pages of the browser interface. Open a web browser and enter either:
  - ▶ <http://my-kaleidescape/installer> (Windows)
  - ▶ <http://my-kaleidescape.local/installer> (Mac)
2. Select the **COMPONENTS** tab.
3. Click on the **Settings** button for the M-Class player attached to the projector.



Click on **Settings**

- The **VIDEO** tab opens in a new window. Select the desired mode by clicking the associated radio button. The modes are explained below.

Select the CinemaScape mode



- Click **OK** to save the settings.

CinemaScape supports the following modes:

### CinemaScape 2.35 Anamorphic mode

This mode is for projectors that use an anamorphic lens, and is the preferred mode for most 2.35 theaters. All content is displayed without user intervention or lens movement, ensuring a seamless viewing experience. Content is sent to the projector as follows:

- ▶ The OSD is drawn using all 1920×1080 pixels of resolution, but images and text are adjusted so that they will appear correctly after horizontal stretching by the lens.
- ▶ 1.78 and 1.33 content are adjusted to display properly after horizontal stretching by the lens.
- ▶ 2.35 content is stretched vertically to fill the entire 1920×1080 frame. Once the lens stretches the image horizontally, the image will fill the 2.35 screen.

## CinemaScape 2.35 Letterbox mode

This mode is for widescreen theaters that use an anamorphic lens that cannot be engaged without also engaging the vertical stretch feature. Kaleidescape advises establishing direct control over the lens wherever possible so that CinemaScape 2.35 Anamorphic mode can be used for higher video quality.

In this mode, content is sent to the projector as follows:

- ▶ The OSD is drawn letterboxed, with black bars at the top and bottom.
- ▶ 1.78 content is displayed postage-stamped, with black bars on all sides.
- ▶ 2.35 content is displayed letterboxed, with black bars on the top and bottom of the image.

Once the projector and lens have applied their respective stretches, the resulting image will fill the height of the screen without large black bars at the top and bottom. There will be black bars of varying widths at the sides depending upon the aspect ratio.

## CinemaScape Native 2.35 Display mode

This mode is for theaters using projectors that can display 2.35 content without moving a separate anamorphic lens into place. These projectors may use a lens zooming mechanism to enlarge 2.35 letterboxed images to fill the screen or use a native 2.35 chip. Since many such projectors automatically detect the presence or absence of black bars and zoom automatically, CinemaScape draws the 2.35 OSD and 2.35 video content letterboxed. Content is sent to the projector as follows:

- ▶ The OSD and 2.35 movies are output letterboxed, with black bars at the top and bottom.
- ▶ 1.78 and 1.33 content are displayed normally.

## CinemaScape and control systems

For theaters that use AMX, Control4 or Crestron control systems to control masking, a new event can be created for masking while in CinemaScape mode. The controller programmer can assume a horizontally centered full-height frame for aspect ratios less than that of the screen, and a vertically centered full-width frame for aspect ratios greater than that of the screen.

The supported control systems will use the `GET_CINEMASCAPE_MASK` command and the corresponding event `CINEMASCAPE_MASK`.

Updated drivers for AMX, Control4, and Crestron will be available from:

[www.kaleidescape.com/support/control-systems](http://www.kaleidescape.com/support/control-systems)

## The Kaleidescape App for iPad

The Kaleidescape App for iPad provides an immersive experience for browsing and searching your collection of movies and music. The app extends the Kaleidescape experience to the iPad, displaying your movie collection with vivid cover art, synopses, and other details. It even puts the most memorable moments in movies right at your fingertips — just select a scene or song marked by Kaleidescape, and it plays instantly on your TV.

The app can also integrate with the apps of supported control systems to avoid the annoyance of switching between apps. For example, the Kaleidescape App for iPad can display volume control buttons. These buttons are displayed only when a connected controller reports that it can control volume. When these buttons are tapped, volume events are sent by the Kaleidescape player to all connected controllers. The control system can then adjust the volume and send the volume level and mute state to be displayed on the iPad. Modules and drivers including volume control hooks for popular control systems such as AMX, Control4, and Crestron will be available from:

[www.kaleidescape.com/support/control-systems](http://www.kaleidescape.com/support/control-systems)

The Kaleidescape App for iPad is available for free on the App Store:

<http://itunes.apple.com/us/app/kaleidescape-app-for-ipad/id487056316?ls=1&mt=8>

## Better Large Movie Collection Support

New enhancements in KEAOS 4.3 provide a significant performance improvement when navigating large movie collections. Customers with large collections will experience quicker responses when starting a movie, returning to the OSD after stopping a movie, or switching between views like Movie Collections and Movie Covers.

## Improved Temperature Monitoring

If the temperature of a hard disk drive in a server rises too much beyond the normal operating range, the server will now shut down automatically.

## Getting Additional Support

For additional help contact Kaleidescape Support:

- ▶ See online resources at [www.kaleidescape.com/support](http://www.kaleidescape.com/support).
- ▶ Contact Kaleidescape Support at [support@kaleidescape.com](mailto:support@kaleidescape.com) or +1 (650) 625-6160.

# Notices

Document Name: KEAOS 4.3 Release Notes

Document Number: 101-0195-00

Publication Date: January, 2012

This document is for informational purposes only. Kaleidescape makes no representations or warranties, express or implied, regarding the accuracy or completeness of the information contained herein and Kaleidescape shall have no obligation to provide updates to this information in the future.

Copyright © 2012 Kaleidescape, Inc. All rights reserved. Kaleidescape and the Kaleidescape logo are trademarks of Kaleidescape, Inc. and are registered in the United States and certain other jurisdictions. CinemaScape is a trademark of Kaleidescape, Inc. iPad and Mac are trademarks of Apple Inc. App Store is a service mark of Apple Inc. Other trademarks and trade names are owned by third parties and may be registered in some jurisdictions.

This update includes Cinavia™ content protection technology. Information about Cinavia technology is provided at the Cinavia Online Consumer Information Center at <http://www.cinavia.com>.