



kaleidescape

## Kaleidescape Modular Disc Vault

### Quick Install Guide

---

The Modular Disc Vault imports and houses Blu-ray Discs. Because digital copies of the discs are stored on the Kaleidescape server, the carousel does not have to rotate for playback, making imported Blu-ray movies available instantly, without touching a disc, from any M-Class player while the disc remains safely housed in the vault.

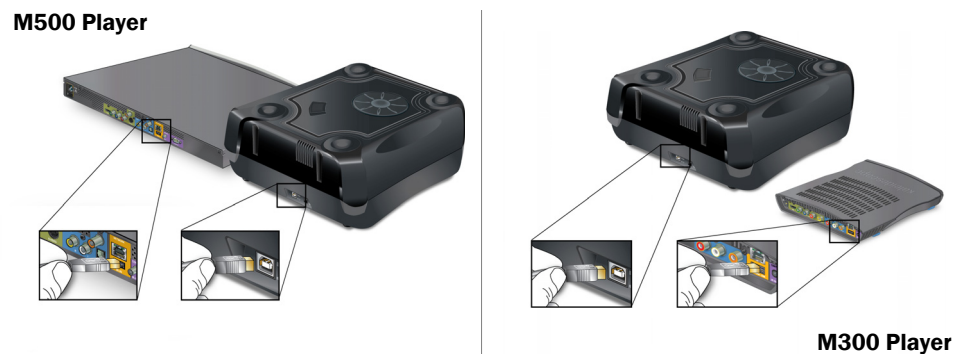
The Modular Disc Vault holds 100 Blu-ray Discs and connects to an M300 Player or M500 Player with a USB cable. Any number of Modular Disc Vaults can be added to a Kaleidescape System, but each must be connected to a separate M-Class player.

**Note:** Use the Modular Disc Vault for Blu-ray Discs only. The Modular Disc Vault CANNOT be used for DVDs or CDs.

### Installation

The vault takes just a few minutes to install.

1. Attach the USB cable from the Modular Disc Vault to the player. See Figure 1. The player must be connected to power, either in standby mode or powered on.



**Figure 1** Connect the USB Cable from the Vault to an M-Class Player

2. Connect the external power supply to the vault. See Figure 2.



**Figure 2** Connect the Vault Power Supply to the Vault

---

**CAUTION**

**If connecting to an M300 Player, do NOT confuse the vault and player power supplies. Power supplies have different power ratings.**

---

3. Connect power supply to the power cord supplied with the vault. Then connect the power cord to the power outlet. The player reboots when the vault is connected to power.

**Note:** Kaleidescape recommends using a grounded outlet with a high-quality surge protector for the power source.

## Initialization

After the vault is connected to power, the vault carousel automatically begins rotating, performing a calibration test.

- ▶ **Wait for initialization to complete.** During initialization, the front display of the vault blinks **000** for about two minutes.

When a number between **1** and **100** is displayed, the vault is ready for discs to be inserted.

If the display continues to blink **000** for more than two minutes, verify that the Kaleidescape System is running software version 4.1 or later by checking **System Status** on the **HOME** page of the browser interface, or checking the **System Summary** on the onscreen display. If the system is connected to the Internet and has not upgraded to software version 4.1, contact Kaleidescape Support.

Table 1 lists possible display readings and conditions.

**Note:** The keypad on the vault is for service only.

**Table 1 Modular Disc Vault Display Readings**

Display	Condition	Required Action
Blinking <b>000</b>	Vault is busy. Do NOT insert discs when vault is blinking <b>000</b> .	Wait for initialization to complete, about two minutes. If condition continues, <ul style="list-style-type: none"> <li>Verify that the system is running software version 4.1 or later.</li> <li>Contact Kaleidescape Support.</li> </ul>
	Player is not connected to power.	Connect the player to a power outlet.
<b>1</b> through <b>100</b>	Ready for discs to be inserted	No action. The number on the display is the slot number currently ready for disc insertion.
<b>000</b>	Vault is full.	No action required
<b>0</b>	Vault is recalibrating.	No action. Wait for display to change.
<b>501</b> <b>502</b>	Front loading slot sensor is blocked.	Remove the disc blocking the front loading slot.
<b>503</b>	Drive sensor is blocked, usually caused by a disc jam.	Power off and on. If the problem persists, contact Kaleidescape Support.
<b>504</b>	Carousel sensor reports difficulty rotating.	Power off and on. If the problem persists, contact Kaleidescape Support.

## Loading Discs

**Note:** Only insert discs when the display shows the numbers **1 through 100**.

1. Insert discs into the vault one at a time, with the disc's label facing to the right, just until disc engages, then release the disc. See Figure 3. Discs can be inserted one after another as long as the display is not blinking **000**.



NEVER insert discs when **000** is blinking on the display.

---



**Note: Always insert discs with the label facing to the right.**

**Figure 3 Insert Discs One at a Time**

**Note:** If a disc does not engage when inserted into the vault, do not force the disc. Remove the disc, wait for the display to display a number **1** through **100**, and reinsert.

As discs are loaded, the number on the display increments by 13 to maintain balance in the vault carousel. When the vault is full, the front panel display shows **000** without blinking.

After inserting discs, there is a brief wait period to determine that no more discs will be inserted at this time. Discs are then automatically identified and imported into the server.

**Note:** Import progress can be monitored on the **DISC VAULT** tab of the browser interface.



**After discs are loaded, avoid moving the vault. Discs can be damaged and can also become dislodged and cause a jam.**

---

## Kaleidescape Support

For additional information, contact Kaleidescape Support.

- ▶ Send an email message to [support@kaleidescape.com](mailto:support@kaleidescape.com).
- ▶ Call the support line at **+1 (650) 625-6160**.

The Kaleidescape website always has the latest support updates.

[www.kaleidescape.com](http://www.kaleidescape.com)