

Programming the Remote Volume Buttons



You can program the **VOLUME** and **MUTE** buttons on the Kaleidescape Remote to control the volume on your TV or other audio device.

1 Press and hold the **INFO** and **PAUSE** buttons at the same time. When the indicator light at the top of the remote begins blinking, release the buttons. The indicator light stays on. The Kaleidescape Remote is now in programming mode.

2 Place a remote that can already control the volume flat on a table with the Kaleidescape Remote 6 inches (15 cm) away.



3 The following steps have to be repeated for the **MUTE** button and both **VOLUME** buttons.

- Check that the indicator light is still on. If it is off, repeat Step 1.
- Press and release the button on the Kaleidescape Remote for the function you want to program.
- Press and hold the button for the same function on the remote that can already control the volume for two seconds.
- The indicator light on the Kaleidescape Remote blinks twice to indicate success. If the indicator light blinks four times, try again.

4 When finished, press the **OK** button on the Kaleidescape Remote. The indicator light blinks twice to confirm programming is complete.

Other Resources and Support

Browser Interface

Use the browser interface to view and edit titles in your library, or to configure your Premiere line system. Access the browser interface from your computer at home by entering one of the following URLs:

<http://my-kaleidescape> (Windows)

<http://my-kaleidescape.local> (Mac)

[http://\[server_ip_address\]](http://[server_ip_address]) (Windows or Mac)

For more information, go to www.kaleidescape.com/browser-interface.

Loan Program

If you have a Blu-ray disc, DVD, or CD that the Kaleidescape System does not recognize, you can send Kaleidescape the disc for processing.

For more information, go to www.kaleidescape.com/loan.

Support and Documentation

For more information, go to www.kaleidescape.com/support.

For how-to videos, go to www.kaleidescape.com/videos.

For more assistance, contact Kaleidescape Support.

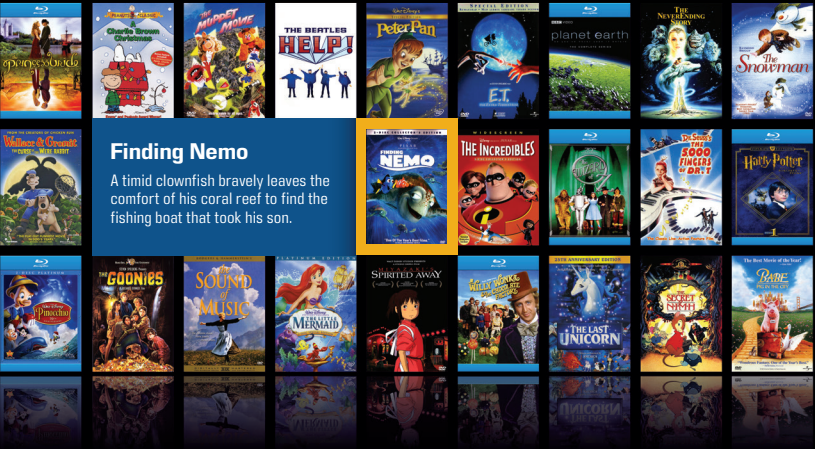
- Send an email message to support@kaleidescape.com.
- Call the support line at +1 (650) 625-6160.

Copyright © 2010-2015 Kaleidescape, Inc. All rights reserved. Kaleidescape and the Kaleidescape logo are trademarks of Kaleidescape, Inc. and are registered in the United States and certain other jurisdictions. iTunes and Mac are trademarks of Apple Inc. “Blu-ray” and “Blu-ray Disc” are trademarks of Blu-ray Disc Association. Other trademarks and trade names are owned by third parties and may be registered in some jurisdictions.

Kaleidescape Part No. 101-0102-00 Rev 3

The Kaleidescape System

Using the Remote



kaleidescape

Using the Remote

1 Turn on the Kaleidescape System

Press the **POWER** button.

2 Select Movies or Music

Press the **MOVIES** or **MUSIC** button to cycle through views.

Movies

Music

(Note: music is not supported on all systems.)

3 Select a Title

Use the **ARROW** buttons to find and select a title.

Tip: Use the **PAGE** buttons to scroll by page.

4 Play It

Press the **PLAY** button to play or resume a title.

Views

List View Use the **UP/DOWN ARROW** buttons to navigate through movies or music. To sort, use the **LEFT/RIGHT ARROW** buttons to select a column and press the **OK** button.

Covers View Use the **ARROW** buttons to highlight a movie or album. If you pause on a particular cover, covers shuffle to show related titles. Press the **OK** button for movie or music details.

Collections View Use the **LEFT/RIGHT ARROW** buttons to select a collection; use the **UP/DOWN ARROW** buttons to navigate through items. Press the **OK** button to select an item.



Kaleidescape Menu

Press the **MENU** button to select a **MOVIE** or **MUSIC** view, access the details page for the disc in the tray, or view summary information about your system.

Disc in Tray Any Blu-ray disc or DVD can be played without cataloging or importing the disc. Press the **PLAY** button to start the movie directly. CDs can be played without being imported on Cinema One and Premiere line systems. Press the **PLAY** button to start the music directly.

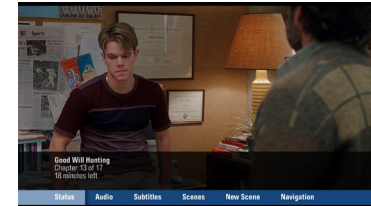
System Selecting **SYSTEM** provides information about content and available space, serial number, software version, and status of any downloads or imports.



Movie Overlay

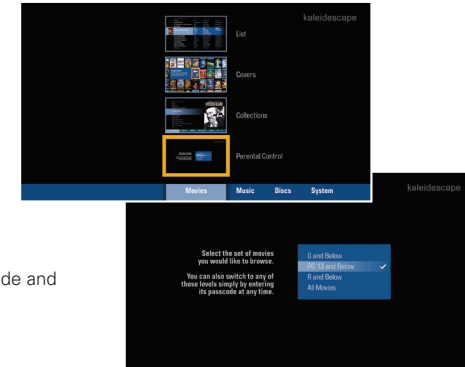
When watching a movie, press the **INFO** button to view the **STATUS** of the current movie including chapter and remaining runtime. Then use the **ARROW** and **OK** buttons to access and change other playback options.

- Audio
- Subtitles
- Scenes
- Extras
- Create New Scenes
- Navigation shortcuts



Parental Control

Press the **MENU** button and select the **MOVIES** tab. Then select **Parental Control** and a rating. Passcodes can be set to hide and protect restricted content.



Music Now Playing

Press the **NOW PLAYING** button, then use the **ARROW** buttons to select a song from the **NOW PLAYING** list. Press the **PLAY** button to jump to a song or the **OK** button to view album details.

Use the **ARROW** and **OK** buttons to control the **REPEAT** and **RANDOM** options.

